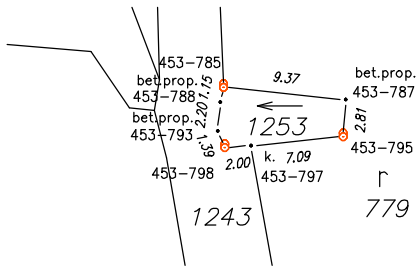
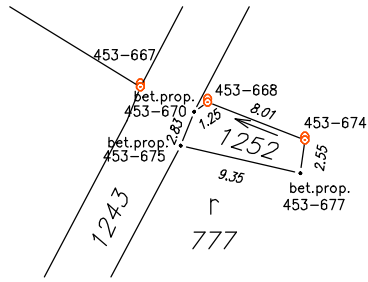


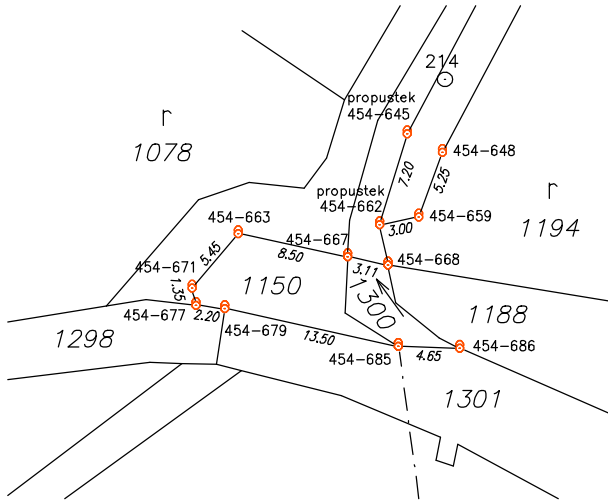
### Detail:A



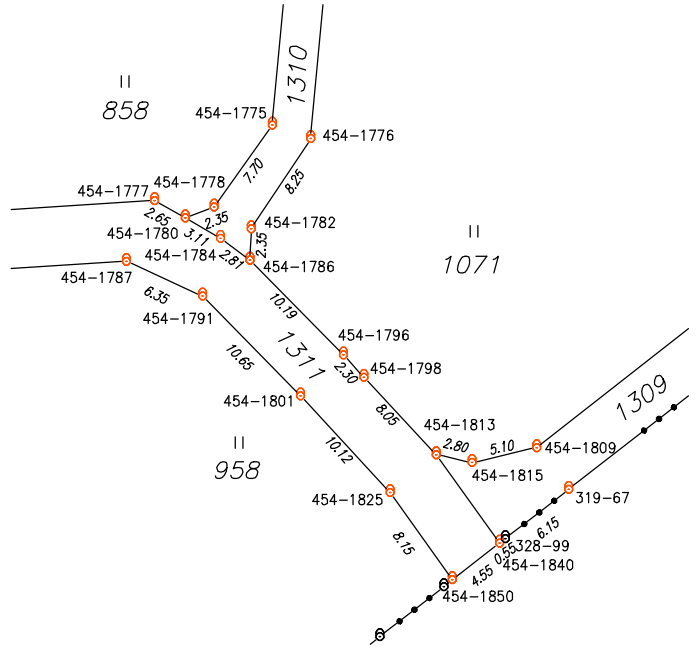
### Detail:B



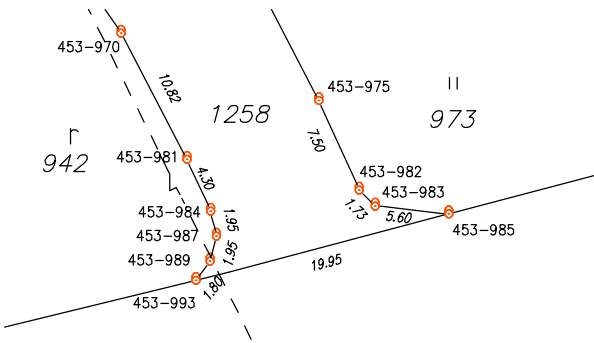
### Detail:C



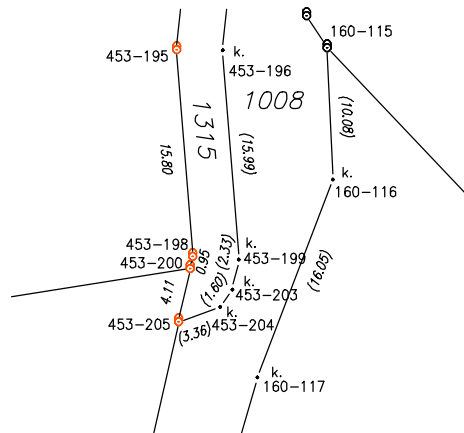
### Detail:D



### Detail:E



### Detail:F



ČÁST 1

125/17

68/27

125/16

118/6

118/4

118/2

116/1

125/8

125/7

274-24

34.14

454-420

96.34

117/2

274-25

63.20

114/4

11 127/1

274-29

51.73

k.ú.Broumy

19.68

274-31

k.ú.Kublov

44.10

454-534

223-2

326-15

16.40

25.90

530/3

326-2

21.46

326-1

22.34

326-6

9.10

454-610

326-5

9.20

326-5

31.77

454-623

25.01

454-634

326-4

23.25

454-650

428-46

50.60

454-750

18.64

454-789

120-8

26.11

25.55

454-844

428-1

Λ

68/1

Λ

533

4007 ⊕

1051

55.90

274-51

454-546

1.05

11 534

Γ 1050

Λ

530/3

4006

Γ 892

Kopaniny

894

70

454-581

24.24

454-585

454-587

89.89

454-538

19.55

454-547

9.30

454-551

25.28

454-566

10.24

454-585

24.24

454-587

89.89

454-750

18.64

454-789

120-8

26.11

25.55

454-844

428-1

Γ 890

11 888

Λ

526/1

11 527/1

526/10

526/7

323

11 526/3

527/4

526/8

324

527/3

527/2

526/5

526/9

11 519/9

⊕ 519/5

11 521/18

Γ 521/33

11 521/34

Γ 521/17

71.7

Γ 893

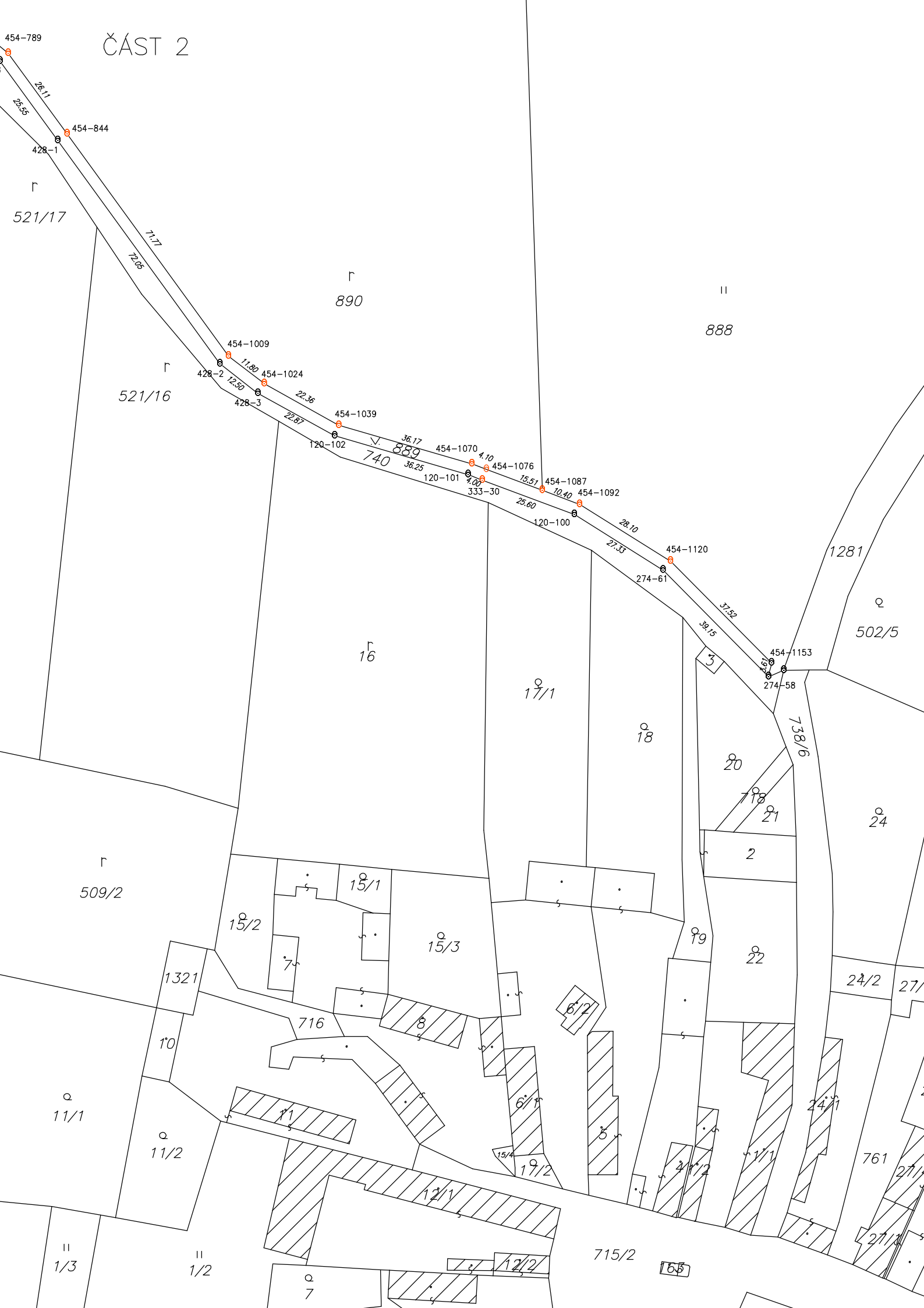
Γ 891

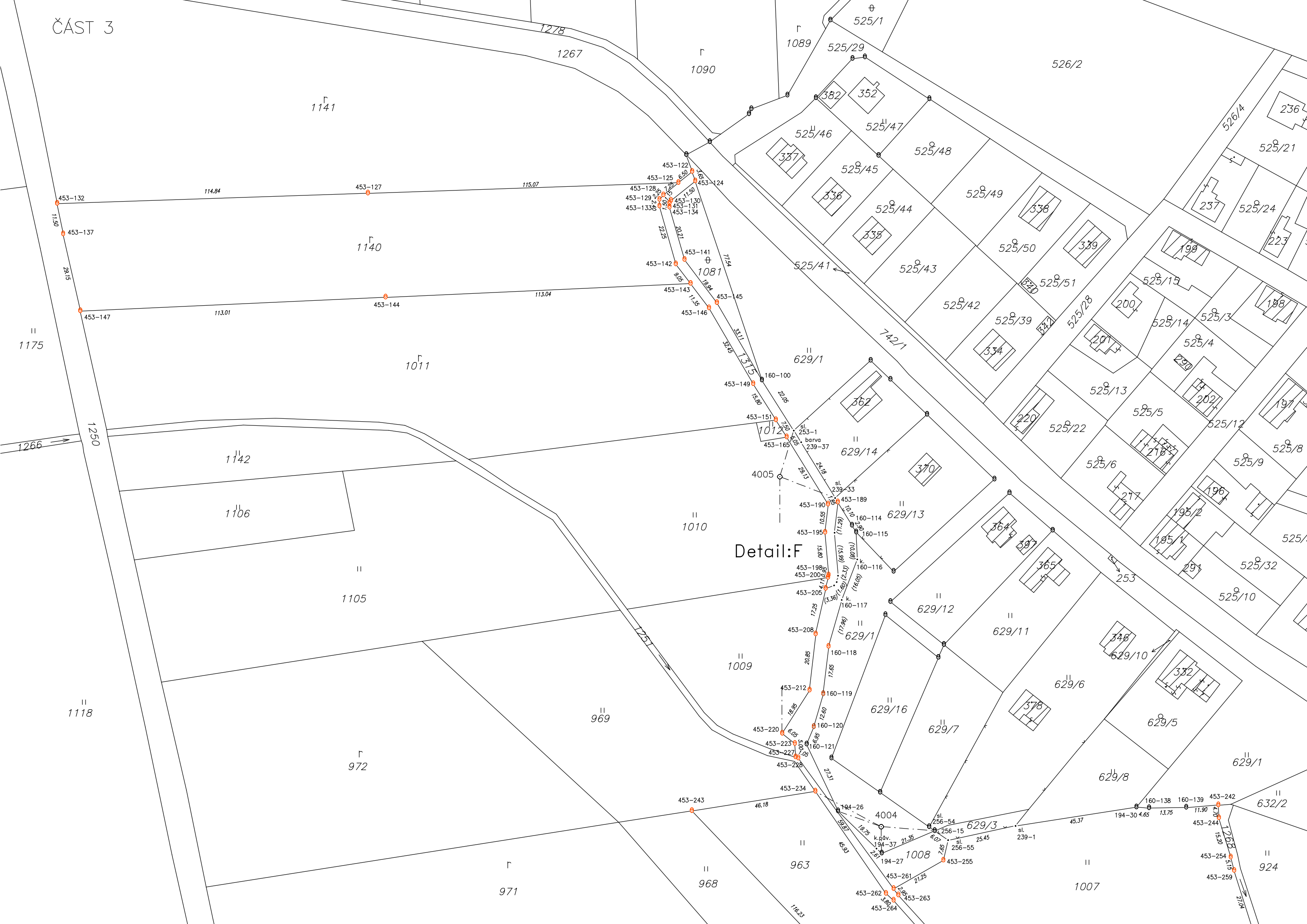
152.45

454-604

11 888

# ČÁST 2





Detail:F



